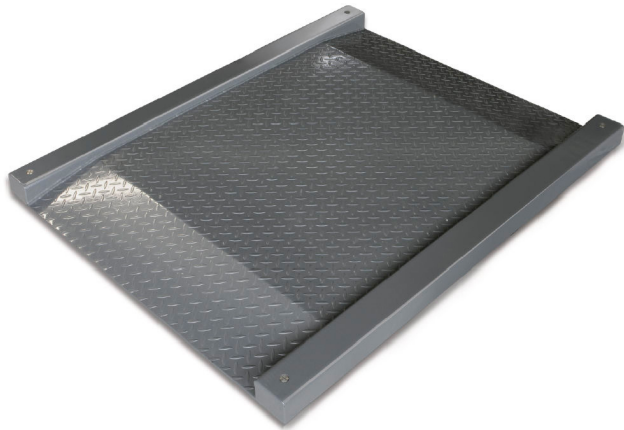


KERN KFD 1500V20M

KERN

Weighing bridge made of non-slip corrugated steel plate, lacquered



Category

Brand	KERN
Product category	Component
Product group	Weighing bridge
Product family	KFD-V20-IP67

Measuring System

Weighing capacity [Max]	1500 kg
Readability [d]	500 g
Minimum weight [Min]	10 kg
Loadcell type	ZEMIC H8C 1 ton

Approval

Verification scale interval [e]	500 g
Conformity assessment possible ex works	✓

Construction

Dimensions weighing platform (W×D×H)	1600×1220×95 mm
Material weighing plate	steel, powder-coated
Material platform	steel, powder-coated
Dimensions weighing surface (W×D)	1000×1000 mm
Cable length	5 m
Display device cable length	5 m
Allowed cable length display device [Max]	30 m
Material load cell(s)	alloyed steel
Load cells - number	4

Functions

IP protection - complete device	IP67 (load cell)
---------------------------------	------------------

IP protection - load cell	IP67
IP protection - platform	IP67

Packing & Shipping

Readability force [d] (N)	2 d
Dimensions packaging (W×D×H)	1610×1250×360 mm
Net weight	125 kg
Shipping method	Freight
Net weight approx.	125 kg
Gross weight approx.	155 kg
Shipping weight	155 kg

Services (optional)

Article number for conformity assessment	965-230
Article number for DAkkS calibration	963-130

Pictograms

STANDARD



FACTORY

